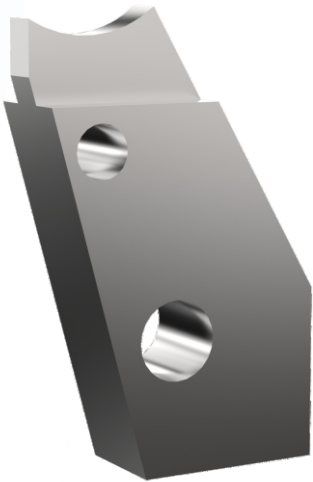
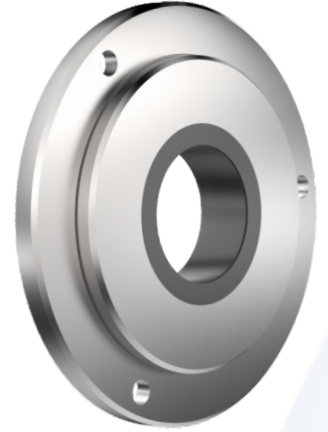


# TOOLING FOR BEARING INDUSTRIES

## GRINDING POSITIONING BUSH

- » Grinding positioning bush is a tooling item used on the duplex grinders (Double Disc) for grinding both faces of bearing rings simultaneously.
- » Due to this demanding requirement, the “Grinding positioning bush” is made of composite construction viz; a wear resistant carbide ring is press fitted to a carbon steel body. The bore of the carbide ring is precision ground a very high level of surface finish and geometrical accuracy.



## CARBIDE SHOE

- » Carbide shoe is used for supporting the bearing races during the grinding and Lapping operation.

## GRINDING ARBOUR

- » Carbide arbours are used in the honing machines.

